


**pfm**medical

Quality and Experience · *since 1971*

 Made in Germany

---

## Rotary Microtomes

› pfm Rotary 3004 M

› pfm Rotary 3005 E

› pfm Rotary 3006 EM

---

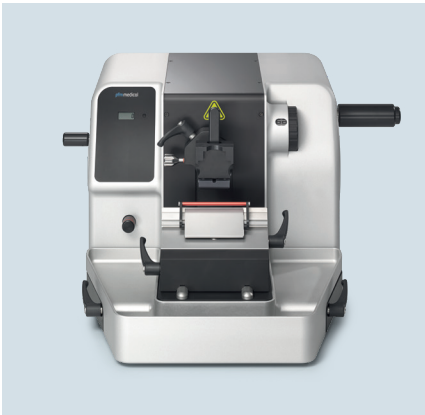
pfmmedical's rotary microtomes are suitable for all applications in routine use, research and industry.

[www.pfmmedical.com](http://www.pfmmedical.com)



pfmmedical's **rotary microtomes** are suitable for all applications in routine use, research and industry. They incorporate the latest microtome technology featuring modern ergonomic design with ease of use. Their outstanding precision ensures consistently reliable results in daily use. Quality - Made in Germany.

### Views



**pfm Rotary 3004 M** (manual)



**pfm Rotary 3005 E** (semi-electronic)



**pfm Rotary 3006 EM** (fully-electronic)

### Benefits

#### Excellent section quality

The robust object and knife/blade holders operating in combination with the horizontal and vertical cross-roller bearing system guarantee maximum stability. This unique technology and the quality of the materials used is reflected in the reliable and consistently high sectioning quality. Together with its ergonomic design these features make pfmmedical rotary microtomes ideal for situations with a high sample throughput.

#### Safe operation

When the object and knife are being mounted a handwheel lock is activated in order to prevent injury.

If the handwheel lock is on, electronic versions of this device will visually indicate this on their display. A colour-marked finger guard offers additional safety in the area of the knife/blade edge.

The handwheel of the pfm Rotary 3006 EM has a removable handle to ensure maximum user safety during motorised sectioning. Additionally, the device can be stopped immediately by pushing the emergency stop button.

#### Simple operation

pfmmedical's electronic rotary microtomes are equipped with a modern touch screen system. The control panels and display elements are clearly arranged according to their functions. This makes the microtome easy and convenient to operate.

#### Precise orientation of samples

The specimens can be aligned quickly and easily to the desired position as well as advanced to the knife/blade edge by using the object orientation system along the X/Y axes and the colour coded tangible zero point setting.

#### Suitable for large samples

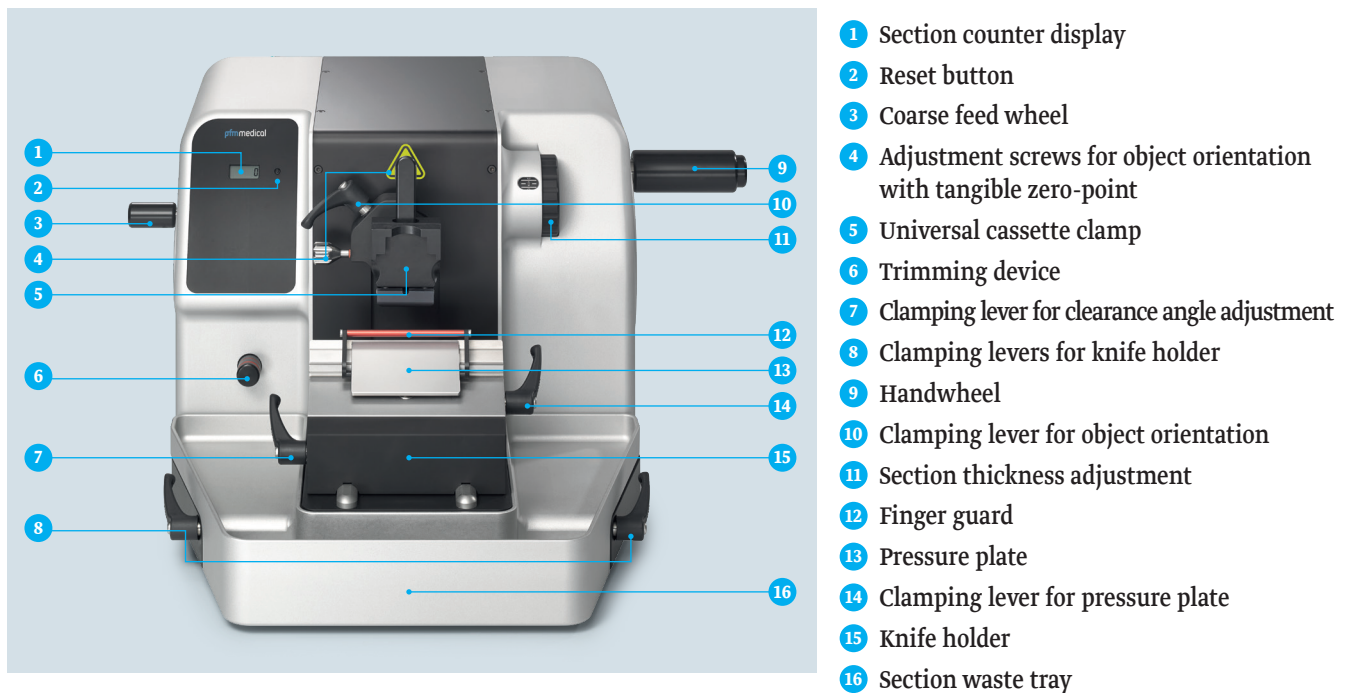
pfmmedical's rotary microtomes are also suitable for use with large universal cassette clamps and can be converted without difficulty. This means that samples of different sizes can be processed depending on customers' requirements.

#### Easy cleaning and care

The surface of the housing is fully anodised and easy to clean. The waste produced during sectioning is caught by the integrated section waste tray and is then easy to discard. The section waste tray is also anodised and easy to clean.

The **pfm Rotary 3004 M** is a modern, manual rotary microtome designed for preparation of thin sections of human and animal tissue samples of varying hardness, as far as they are suitable for manual cutting. The device can be used for all applications in industry, research and medicine as a diagnostic aid related to an in vitro examination within the histopathological process. It may only be operated by appropriately trained personnel. The sections obtained with the product should assist the pathologist in the evaluation of the physiological or pathological condition of the tissue samples.

## View



## Details

- ▶ Ergonomic design
- ▶ Backlash- and maintenance-free horizontal and vertical cross-roller bearing system
- ▶ Smooth-running handwheel
- ▶ Handwheel locking system in each position
- ▶ Quick change system for object clamps
- ▶ Ease of object orientation due to tangible zero point setting
- ▶ Retraction system
- ▶ Trimming device
- ▶ Section counter
- ▶ Finger guard
- ▶ Section waste tray
- ▶ Anodised surface, easy to clean

## Technical Data

- ▶ **Coarse feed:** manually via coarse feed wheel
- ▶ **Fine feed:** manually via handwheel
- ▶ **Section thickness:** 0.5–60  $\mu\text{m}$
- ▶ **Setting range:** 0.5–10  $\mu\text{m}$  in 0.5  $\mu\text{m}$  steps / 10–20  $\mu\text{m}$  in 1  $\mu\text{m}$  steps / 20–60  $\mu\text{m}$  in 5  $\mu\text{m}$  steps
- ▶ **Trimming device:** two trimming steps 10  $\mu\text{m}$  and 20  $\mu\text{m}$
- ▶ **Retraction:** 40  $\mu\text{m}$
- ▶ **Horizontal/Vertical range:** 30 mm/70 mm
- ▶ **Object orientation:** x- and y-axes universal 12°, z-axis up to 360°
- ▶ **Maximum sample size:**
  - ▶ Universal cassette clamp, standard embedding cassettes
  - ▶ Standard object clamp large, sample size 45 × 60 mm
  - ▶ Universal cassette clamp large, super mega embedding cassettes
- ▶ **Dimensions (W/D/H):** 450 × 530 × 275 mm
- ▶ **Weight:** 38 kg

## Ordering Information

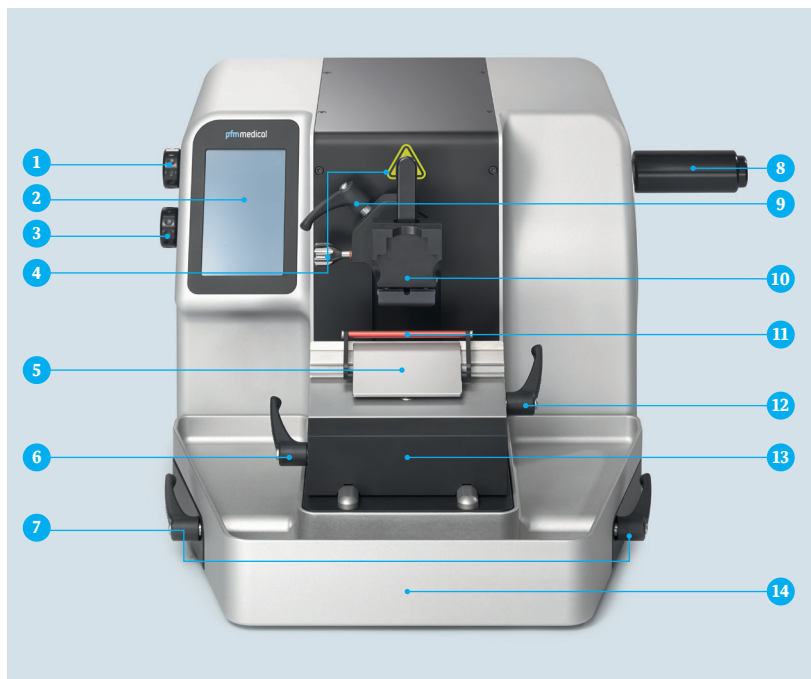
### pfm Rotary 3004 M

REF	PU
0300410	1 pc.

- Including**
- ▶ Base device
  - ▶ 1 Section waste tray
  - ▶ 1 Protective cover
  - ▶ Without knife holder base and upper jaw
  - ▶ Without object clamp and adapters

The **pfm Rotary 3005 E** is a modern, semi-electronic rotary microtome designed for preparation of thinsections of human and animal tissue samples of varying hardness, as far as they are suitable for manual cutting. The device can be used for all applications in industry, research and medicine as a diagnostic aid related to an in vitro examination within the histopathological process. It may only be operated by appropriately trained personnel. The sections obtained with the product should assist the pathologist in the evaluation of the physiological or pathological condition of the tissue samples.

## View



- 1 Control wheel settings
- 2 Display
- 3 Control wheel coarse feed/trimming
- 4 Adjustment screws for object orientation with tangible zero-point
- 5 Pressure plate
- 6 Clamping lever for clearance angle adjustment
- 7 Clamping levers for knife holder
- 8 Handwheel
- 9 Clamping lever for object orientation
- 10 Universal cassette clamp
- 11 Finger guard
- 12 Clamping lever for pressure plate
- 13 Knife holder
- 14 Section waste tray

## Details

- ▶ Ergonomic design
- ▶ Backlash- and maintenance-free horizontal and vertical cross-roller bearing system
- ▶ Smooth-running handwheel
- ▶ Handwheel locking system in each position
- ▶ Quick change system for object clamps
- ▶ Ease of object orientation due to tangible zero point setting
- ▶ Memory function
- ▶ All electronic settings and functions are operated by a touch screen
- ▶ Section counter
- ▶ Section thickness addition
- ▶ Finger guard

## Technical Data

- ▶ **Section thickness:** 0.5-100 µm
- ▶ **Setting range:** 0.5-10 µm in 0.5 µm steps / 10-20 µm in 1 µm steps / 20-50 µm in 5 µm steps / 50-100 µm in 10 µm steps
- ▶ **Trimming mode:** 1-500 µm
- ▶ **Retraction:** 0-100 µm in 5 µm steps (in manual operation)
- ▶ **Coarse feed speed:** 1.0 mm/s
- ▶ **Remaining feed indication 1 mm horizontal:** visual and audible
- ▶ **Horizontal/Vertical range:** 30 mm/70mm
- ▶ **Object orientation:** x- and y-axes universal 12°, z-axis up to 360°
- ▶ **Maximum sample size:**
  - ▶ Universal cassette clamp, standard embedding cassettes
  - ▶ Standard object clamp large, sample size 45 × 60 mm
  - ▶ Universal cassette clamp large, super mega embedding cassettes
- ▶ **Power supply:** 100/120/230/240 V AC, 50-60 Hz
- ▶ **Dimensions (W/D/H):** 450 × 530 × 275 mm
- ▶ **Weight:** 38 kg

## Ordering Information

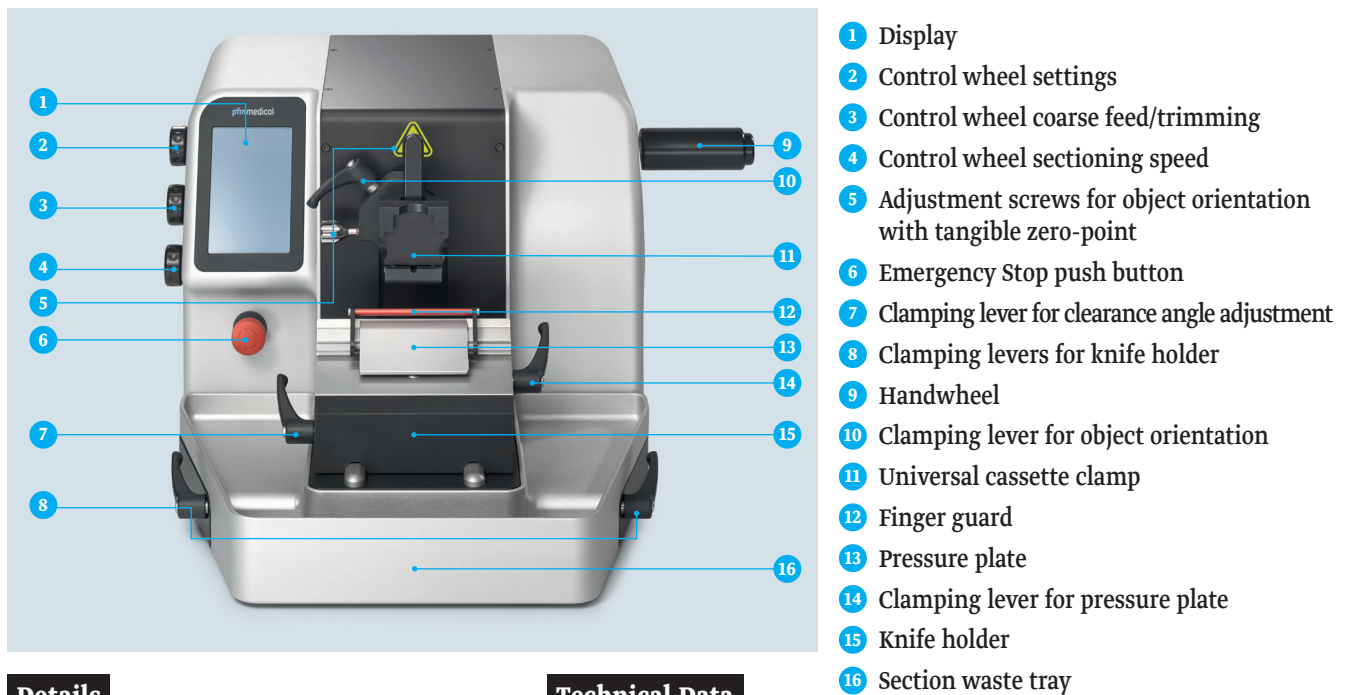
### pfm Rotary 3005 E

REF	PU
0300510	1 pc.

- Including**
- ▶ Base device
  - ▶ 1 Section waste tray
  - ▶ 1 Protective cover
  - ▶ 1 Mains power cable
  - ▶ Without knife holder base and upper jaw
  - ▶ Without object clamp and adapters
  - ▶ Without control panel

The **pfm Rotary 3006 EM** is a modern, fully-electronic rotary microtome designed for preparation of thin sections of human and animal tissue samples of varying hardness, as far as they are suitable for cutting. The device can be used for all applications in industry, research and medicine as a diagnostic aid related to an in vitro examination within the histopathological process. It may only be operated by appropriately trained personnel. The sections obtained with the product should assist the pathologist in the evaluation of the physiological or pathological condition of the tissue samples.

## View



## Details

- ▶ Ergonomic design
- ▶ Backlash- and maintenance-free horizontal and vertical cross-roller bearing system
- ▶ Smooth-running handwheel with removable handle
- ▶ Handwheel locking system in each position
- ▶ Quick change system for object clamps
- ▶ Ease of object orientation due to tangible zero point setting
- ▶ All electronic settings and functions are operated by a touch screen
- ▶ Cutting window
- ▶ Memory function
- ▶ Section counter
- ▶ Section thickness addition
- ▶ Finger guard
- ▶ Foot switch

## Technical Data

- ▶ **Section thickness:** 0.5–100 µm
- ▶ **Setting range:** 0.5–10 µm in 0.5 µm steps / 10–20 µm in 1 µm steps / 20–50 µm in 5 µm steps / 50–100 µm in 10 µm steps
- ▶ **Trimming mode:** 1–500 µm
- ▶ **Coarse feed speed:** 1.0 mm/s
- ▶ **Sectioning modes:** manual, continuous, single, step
- ▶ **Sectioning speed max.:** 300 mm/s
- ▶ **Retraction:** 0–100 µm in 5 µm steps (in manual operation)
- ▶ **Remaining feed indication 1 mm horizontal:** visual and audible
- ▶ **Horizontal/Vertical range:** 30 mm/70 mm
- ▶ **Object orientation:** x- and y-axes universal 12°, z-axis up to 360°
- ▶ **Maximum sample size:**
  - ▶ Universal cassette clamp, standard embedding cassettes
  - ▶ Standard object clamp large, sample size 45 × 60 mm
  - ▶ Universal cassette clamp large, super mega embedding cassettes
- ▶ **Power supply:** 100/120/230/240 V AC, 50–60 Hz
- ▶ **Dimensions (W/D/H):** 450 × 530 × 275 mm
- ▶ **Weight:** 38 kg

## Ordering Information

### pfm Rotary 3006 EM

REF	PU
0300610	1 pc.

- Including**
- ▶ Base device
  - ▶ 1 Section waste tray
  - ▶ 1 Protective cover
  - ▶ 1 Mains power cable
  - ▶ Without knife holder base and upper jaw
  - ▶ Without object clamp and adapters
  - ▶ Without foot switch
  - ▶ Without control panel

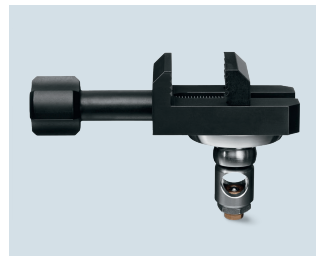
Ordering Accessories



**Universal cassette clamp, orientable**

REF 013019

- ▶ Universal cassette clamp, orientable
- ▶ Quick-release clamp system for all available cassettes
- ▶ Crossways and lengthways clamping possible
- ▶ Object clamp without adapter REF 010003



**Standard object clamp, orientable**

REF 010044

- ▶ Orientable version with adapter
- ▶ Maximum specimen size: 40 × 45 mm
- ▶ Object clamp without adapter REF 010004



**Universal cassette clamp large, orientable**

REF 013020

- ▶ Orientable version with adapter
- ▶ Quick-release clamp system for large embedding cassettes
- ▶ Crossways and lengthways clamping possible
- ▶ Object clamp without adapter REF 013022



**Universal cassette clamp large slim, orientable**

REF 013023

- ▶ Quick-release clamp system for super-mega slim embedding cassettes
- ▶ Crossways and lengthways clamping possible
- ▶ Orientable version with adapter
- ▶ Object clamp without adapter REF 013024



**Standard object clamp large, orientable**

REF 013009

- ▶ Orientable version with adapter
- ▶ For large specimens
- ▶ Maximum specimen size 45 × 60 mm
- ▶ Object clamp without adapter REF 013010



**Adapter orientable**

REF 013016

- ▶ The orientable adapter is suitable for pfm Slide and Rotary microtomes
- ▶ For object orientation



**Adapter fixed**

REF 030055

- ▶ Adapter for direct adaptation



**Distance adaptor object orientation 6 mm**

REF 010046

- ▶ Suitable for all pfmmedical object clamps
- ▶ Distance 6 mm



**Foil clamp, orientable**

REF 030057

- ▶ Spring loaded jaws secure the specimen in position
- ▶ Orientable version with adapter



**Round specimen clamp, orientable**

REF 030058

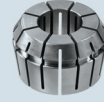
- ▶ For hard sectioning of round specimens (6, 15 and 25 mm diameter)
- ▶ Orientable version with adapter
- ▶ Without inserts

## Ordering Accessories

**Insert for round specimen clamp, 6 mm**

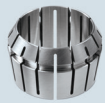
REF 030059

- ▶ Diameter 6 mm

**Insert for round specimen clamp, 15 mm**

REF 030060

- ▶ Diameter 15 mm

**Insert for round specimen clamp, 25 mm**

REF 030061

- ▶ Diameter 25 mm

**V-insert**

REF 030062

- ▶ To be fitted in the standard object clamp
- ▶ To fix variable size of round specimens

**R-insert**

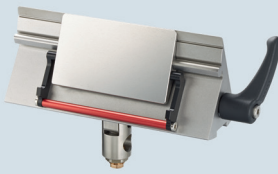
REF 030063

- ▶ To be fitted in the standard object clamp
- ▶ For round specimens diameter 24-25 mm

**Standard knife holder, upper jaw**

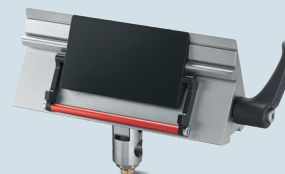
REF 030064

- ▶ For use with steel and tungsten carbide knives up to 16 cm length.
- ▶ With finger guard

**Disposable blade holder, upper jaw, low profile**

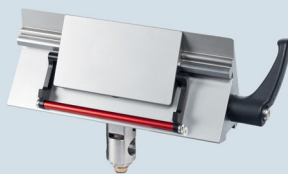
REF 030052

- ▶ For use with low profile disposable microtome blades (narrow blades).
- ▶ Removable pressure plate
- ▶ Easy to clean

**Disposable Blade Holder, Upper Jaw Low Profile Black**

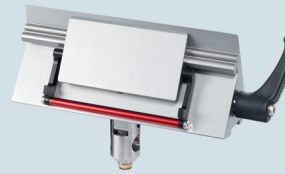
REF 030072

- ▶ For use with low profile disposable microtome blades (narrow blades)
- ▶ Removable black pressure plate
- ▶ Easy to clean

**Disposable blade holder, upper jaw, high profile**

REF 030053

- ▶ For use with high profile disposable microtome blades (wide blades)
- ▶ Removable pressure plate
- ▶ Easy to clean

**Disposable blade holder upper jaw, HP TC**

REF 030065

- ▶ For use with FEATHER® microtome blade HP TC
- ▶ Removable pressure plate
- ▶ To be fitted on the pfm Rotary 3006 EM
- ▶ Easy to clean

Ordering Accessories



**Disposable blade holder, upper jaw low profile lateral**

REF 030071

- ▶ The upper part of the disposable blade holder can be moved sideways (laterally)
- ▶ Three defined stop positions (left, center, right)
- ▶ For use with Low Profile disposable microtome blades (narrow blades)
- ▶ Easy to clean



**Pressure plate Black**

REF 030069

- ▶ Material: Black anodised aluminium
- ▶ Suitable for disposable blade holder 030052 and 030071



**Knife holder base**

REF 030051

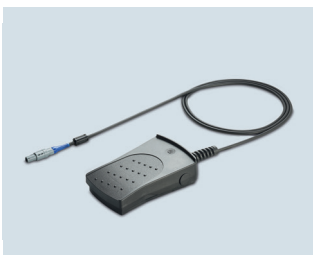
- ▶ Designed to hold the upper jaw of the disposable blade holder
- ▶ Fixed to the microtome base plate using the knife holder mounting device
- ▶ Removable
- ▶ Easy to clean



**Field magnifier set with illumination**

REF 030066

- ▶ Magnification 2.5 x
- ▶ For facilitate the knife/blade alignment and approach for sectioning
- ▶ Optimal view position



**Foot switch**

REF 030054

- ▶ To be fitted on the pfm Rotary 3006 EM



**Section waste tray**

REF 030050

- ▶ Material: anodised aluminium
- ▶ Easy to clean



**Control panel pfm Rotary 3005 E**

REF 030070

- ▶ Control panel for the pfm Rotary 3005 E



**Control panel pfm Rotary 3006 EM**

REF 030068

- ▶ Control panel for the pfm Rotary 3006 EM

Contact

Should you have any questions our Customer Solutions Team is happy to advise you.

service@pfmmmedical.com

+49 (0)2236 9641-220

+49 (0)2236 9641-51

pfm medical gmbh  
Wankelstraße 60  
50996 Köln  
Germany



Follow us!



(01)04042301173164(10)2024-01-01